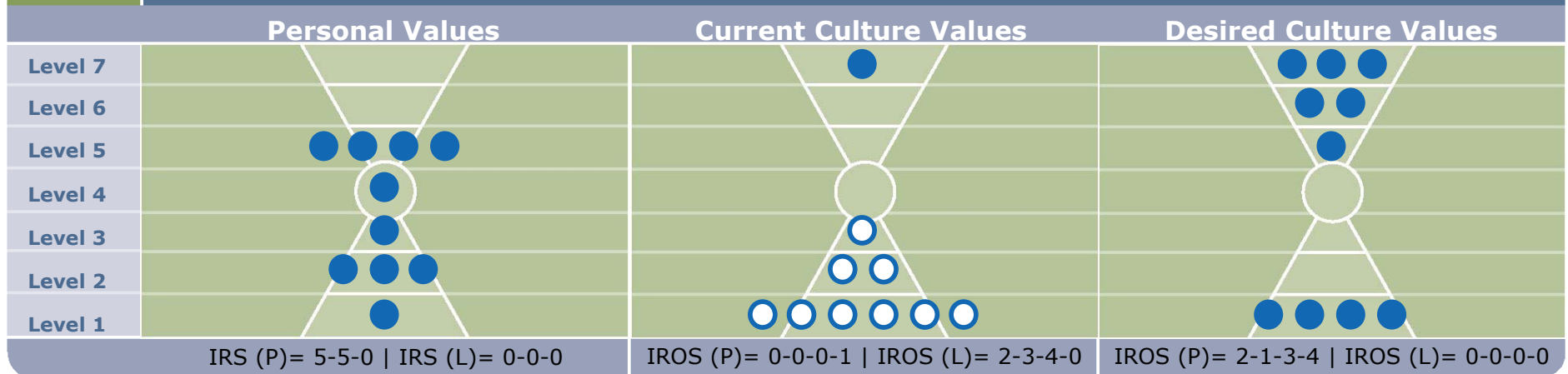




Skopje Region, Community Assessment: Group (199)

КОУЧ
ЕРА



	Personal Values	Current Culture Values	Desired Culture Values
	IRS (P)= 5-5-0 IRS (L)= 0-0-0	IROS (P)= 0-0-0-1 IROS (L)= 2-3-4-0	IROS (P)= 2-1-3-4 IROS (L)= 0-0-0-0
PV - CC 0	1. семејство 82 2(R)	1. невработеност (L) 107 1(O)	1. можности за вработување 93 1(O)
CC - DC 1	2. чесност 70 5(I)	2. несигурност за иднината (L) 83 1(I)	2. грижа за идните генерации 86 7(S)
PV - DC 1	3. соработка 65 5(R)	3. сиромаштија (L) 79 1(I)	3. квалитет на живеење 72 6(I)
Health Index (PL)	4. здравје 60 1(I)	4. корупција (L) 76 1(O)	4. финансиска стабилност 69 1(I)
PV: 10-0	5. одговорност 52 4(I)	5. бирократија (L) 59 3(O)	5. мир 66 7(S)
CC: 1-9	6. амбиција 51 3(I)	6. еколошко загадување (L) 59 1(O)	6. намалување на сиромаштијата 63 1(O)
DC: 10-0	7. креативност 51 5(I)	7. криминал/насилство (L) 50 1(R)	7. соработка 57 5(R)
Positive	8. почит 50 2(R)	8. мир 49 7(S)	8. економски раст 55 1(O)
Limiting	9. грижливост 44 2(R)	9. непотизам (L) 45 2(R)	9. еколошка свест 53 7(S)
	10. правичност 43 5(R)	10. обвинување (L) 41 2(R)	10. свест за животната средина 53 6(S)

Black Underline = PV & CC

Orange = CC & DC

P = Positive

L = Potentially Limiting
(white circle)

I = Individual

O = Organizational

Orange = PV, CC & DC

Blue = PV & DC

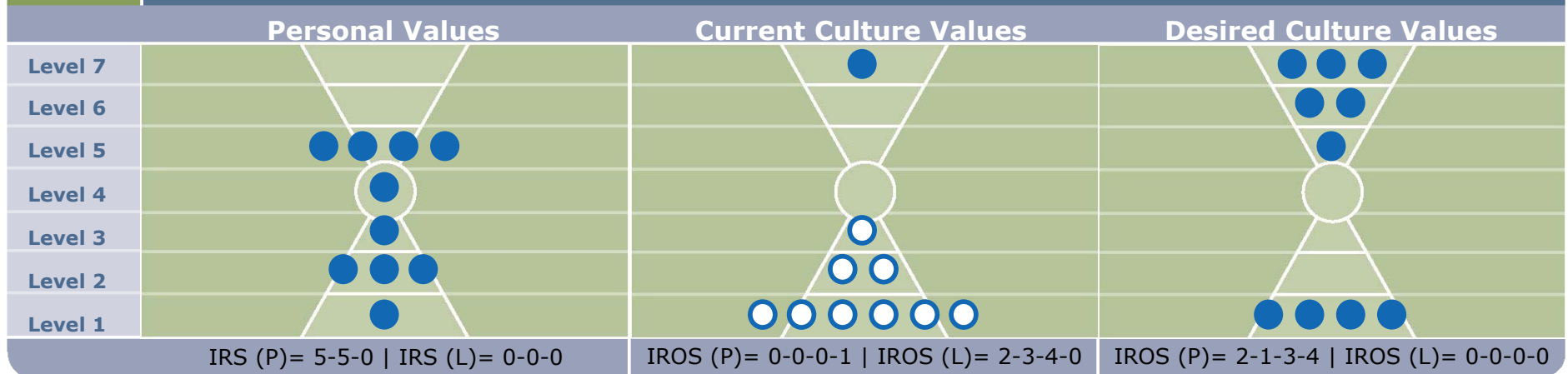
R = Relationship

S = Societal



Skopje Region, Community Assessment: Group (199)

KOYU
EPA



Matches	1. family	82 2(R)	1. unemployment (L)	107 1(O)	1. employment opportunities	93 1(O)
PV - CC 0 CC - DC 1 PV - DC 1 Health Index (PL) PV: 10-0 CC: 1-9 DC: 10-0	2. honesty	70 5(I)	2. uncertainty about the future (L)	83 1(I)	2. concern for future generations	86 7(S)
	3. cooperation	65 5(R)	3. poverty (L)	79 1(I)	3. quality of life	72 6(I)
	4. health	60 1(I)	4. corruption (L)	76 1(O)	4. financial stability	69 1(I)
	5. responsibility	52 4(I)	5. bureaucracy (L)	59 3(O)	5. peace	66 7(S)
	6. ambition	51 3(I)	6. environmental pollution (L)	59 1(O)	6. poverty reduction	63 1(O)
	7. creativity	51 5(I)	7. crime/violence (L)	50 1(R)	7. cooperation	57 5(R)
	8. respect	50 2(R)	8. peace	49 7(S)	8. economic growth	55 1(O)
	9. caring	44 2(R)	9. nepotism (L)	45 2(R)	9. ecological awareness	53 7(S)
	10. fairness	43 5(R)	10. blame (L)	41 2(R)	10. environmental awareness	53 6(S)

Black Underline = PV & CC

Orange = CC & DC

P = Positive

L = Potentially Limiting
(white circle)

I = Individual

O = Organizational

Orange = PV, CC & DC

Blue = PV & DC

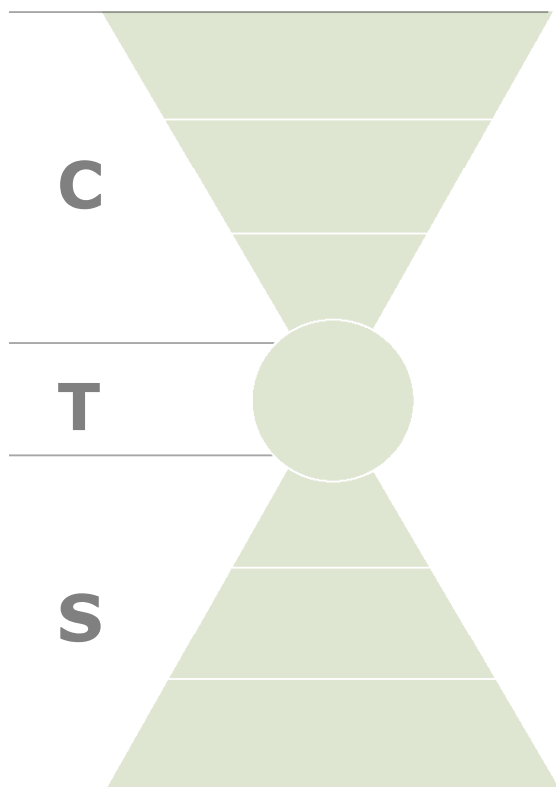
R = Relationship

S = Societal

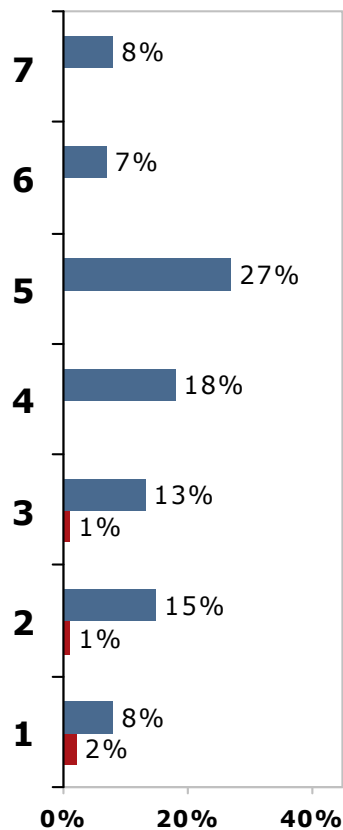


Skopje Region, Community Assessment: Group (199)

KOYЧ
EPA

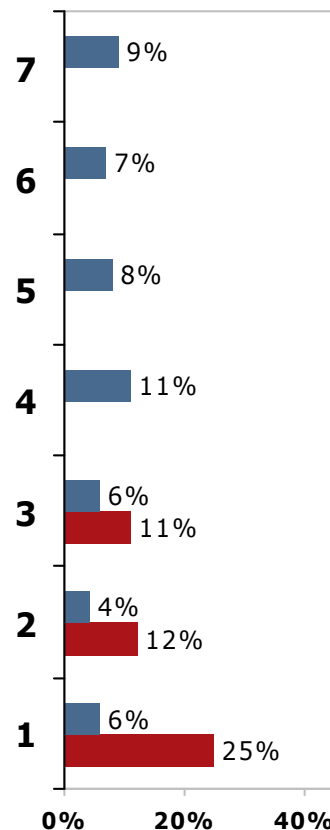


Personal Values



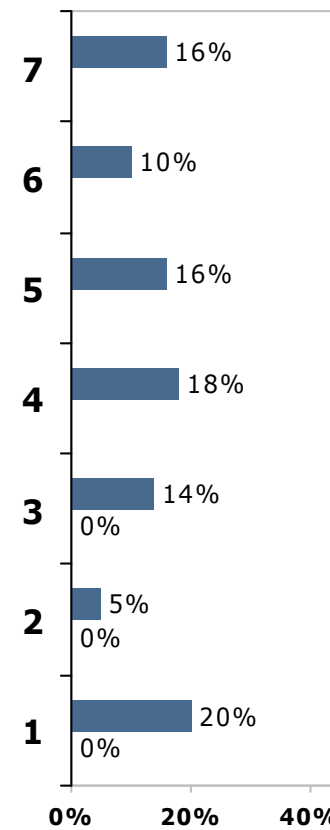
CTS = 42-18-39
Entropy = 4%

Current Culture Values



CTS = 24-11-65
Entropy = 48%

Desired Culture Values



CTS = 42-18-40
Entropy = 0%

C = Common Good
T = Transformation
S = Self-Interest

■ Positive Values
■ Potentially Limiting Values



Skopje Region, Community Assessment: Group (199)

КОУЧ
EPA

